

THE O FOUNTAIN

Installation and Maintenance Guide

The O Fountain is 100% Australian made. The Glass Reinforced Concrete sculpture is manufactured in regional Victoria (Gippsland), Australia.

Dimensions

Height	1,395mm
Width	804mm
Weight	120 kg (TBC)

Material

Outer Shell	15mm Glass Reinforced Concrete (GRC)
MPa	21
Nozzle	Stainless Steel
Push Buttons	Stainless Steel
Drain Gate	Glass Reinforced Concrete
Base Plate	Stainless Steel
Mounting Frame	Stainless Steel
Flow rate	12.6 litres p.minute
Power	None
Operating temperature	Ambient
Minimum operating temperature	1 degree C
Rated working pressure	600 kPa

Hosing

Internal	5/6"
Inlet connection	1/2" BSP

Certification

Disability Accessible - Certified (DO-16-1958)

WaterMark (AS/NZ4020 - for detail visit <http://bit.ly/WMK26130>)

Service and Maintenance

The O fountain has been developed with support from Zip Water, therefore we highly recommend to book a Zip Service Technician in the event the unit needs repair and/or a part is ready for replacement.

Filter

- The filter needs replacement every 12 months or when more than 96,000 Litres has been dispensed.
- The filter part number is 92323-ZGP65S
- We will send a reminder email or please contact the O initiative to book in a filter replacement service.
- The Zip Water Replacement Filter is \$330 ex GST.
- A visit by a Zip Water Technician to install the replacement filter including a Sanitation Service (making sure the filter is activated correctly) is: \$99 standard call out fee +\$45 per 15 mins.

Parts that may need replacement over time:

ENWARE BUB260B ASSEMBLY, SPRING ACTION STUFFING BOX

This is the push button and may need replacement.

APEX VALVE - FiltaMate FM 600

This is the pressure limiting valve that is in the box with the isolation valve. The manufacturer recommends replacing this item every 5 years.

Please note: The Enware Stuffing Box is pressure operated. When the filter is at capacity (or when clogged up) the pressure will drop and the stuffing box will no longer automatically close. It will look as if the fountain is leaking, however, it simply means that the filter needs replacement.

WARRANTY

The warranty is a standard 12-month warranty on parts. Meaning that if any part should fail within 12 months from the date of installation, except as detailed below, that part will be repaired or replaced free of charge by the O Initiative, its Distributor or Service Provider, provided that:

- The O fountain is installed and used strictly in accordance with the instructions supplied; and
- Any failure is not due to accident, misuse, abuse, unsuitable water conditions, use of non-authorized parts including non-authorized filters or to any alteration, modification or repair by any party not expressly nominated by The O Initiative.
- No warranty applies to the service life of any water filtration cartridge installed, as filter cartridge service life may vary according to water quality and the rate of water consumption.

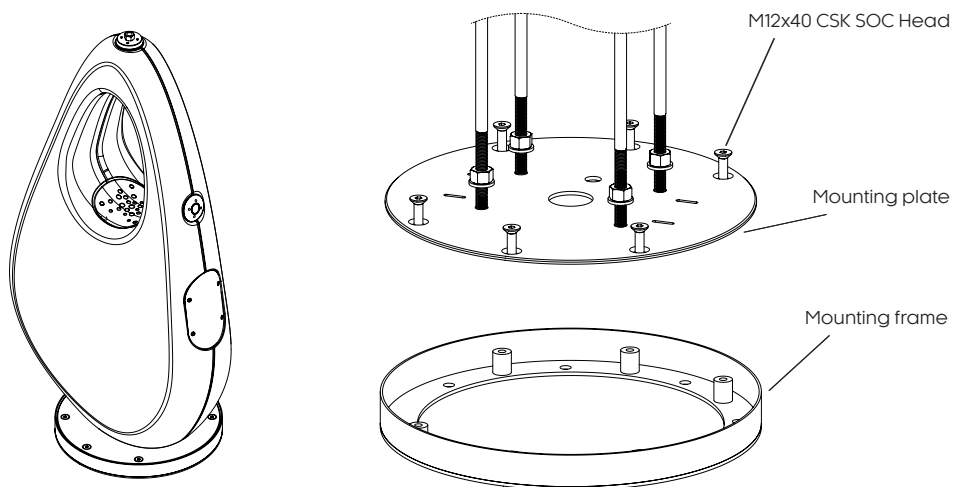
The standard warranty covers the cost of both parts and labour.

Anchoring

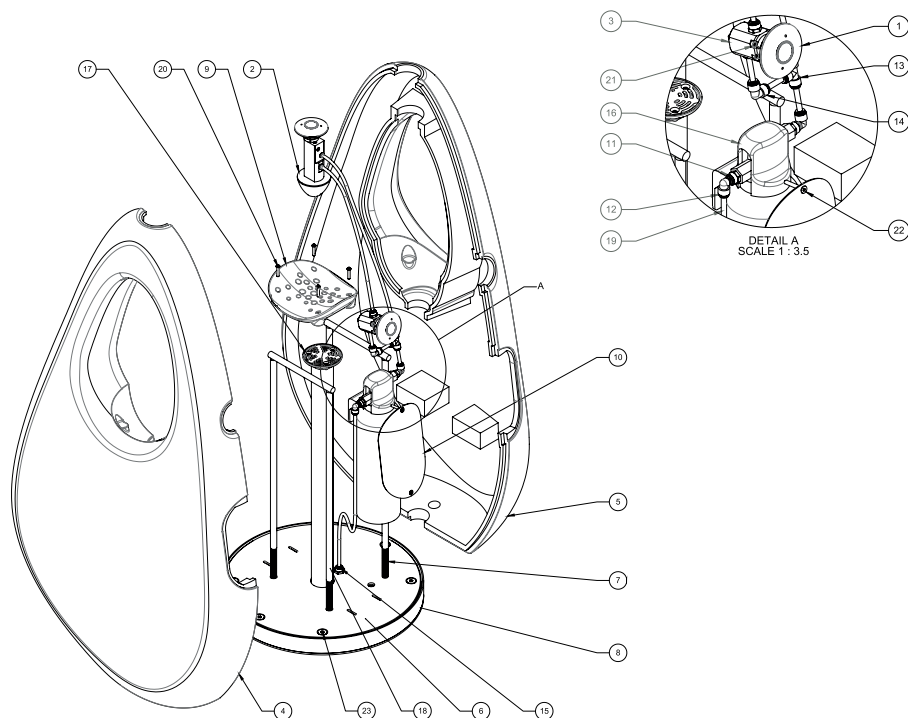
The O Fountain is delivered with the stainless steel mounting plate fitted securely to the reinforced concrete body. A matching stainless steel mounting frame is supplied for fixing onto a concrete slab at the point of installation.

Several options for installation are shown in p.10, p.11, p.12.

Each unit is supplied with an isolation valve that is connected to a pressure reducing valve. (Ball Valve, Y-strainer, Pressure Limiting Valve)



Component Parts

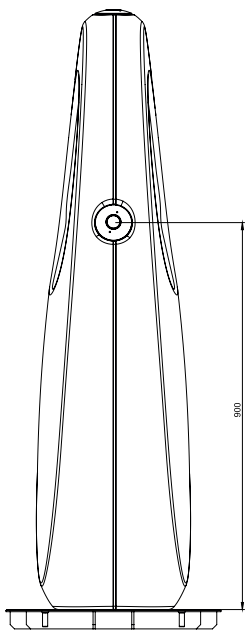
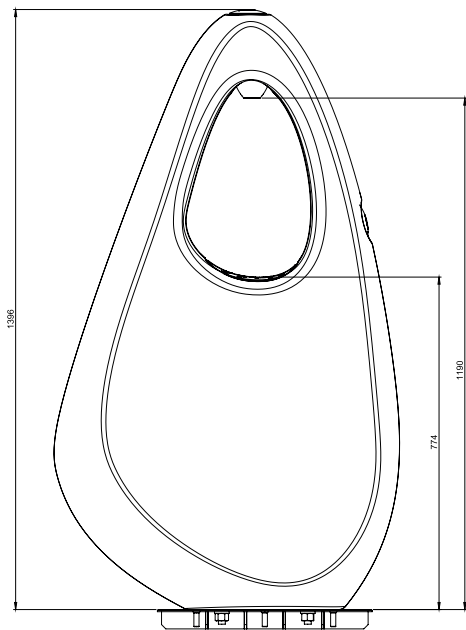
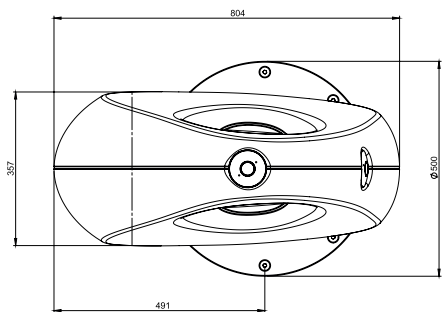


- 1. Push Button
- 2. Outlet Manifold
- 3. Side Manifold
- 4. Casing Front
- 5. Casing Rear
- 6. Mounting Plate
- 7. Rag Bolts
- 8. Mounting Frame

- 9. Drain Cover
- 10. Access Door
- 11. Straight Adapter 5/16"
- 12. Stem Elbow
- 13. Equal Tee
- 14. Equal Elbow
- 15. Bulkhead Connector
- 16. Zip - Global Plus Filter

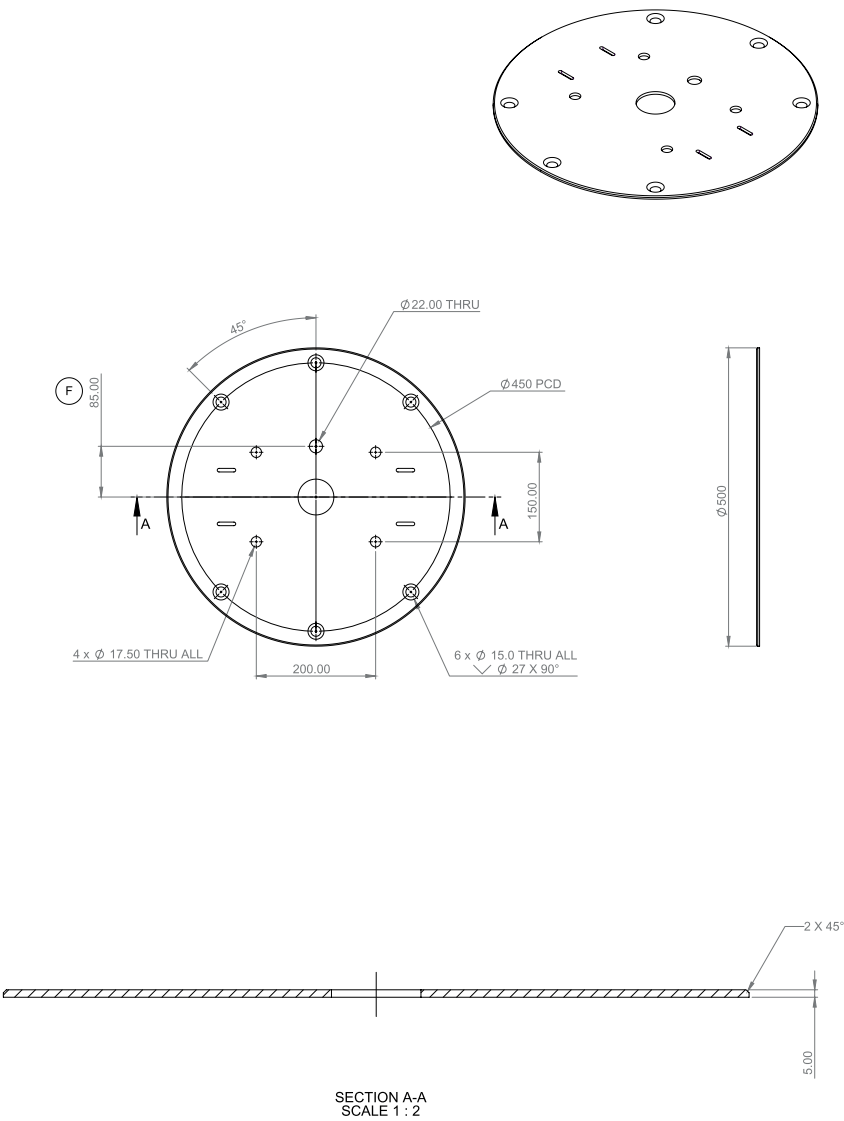
- 17. Poly Drain DN50
- 18. Waste Pipe DN50
- 19. Feeder Pipe
- 20. Cover Fixing Screw
- 21. Plate Screw
- 22. Door Fixing Screw
- 23. Mounting Bolt

Detail A

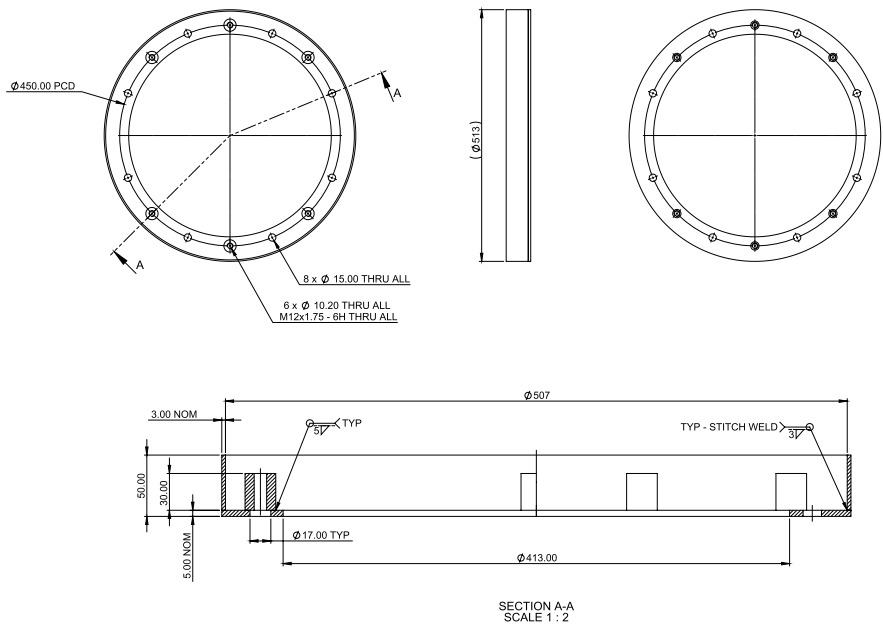


Overall Dimensions

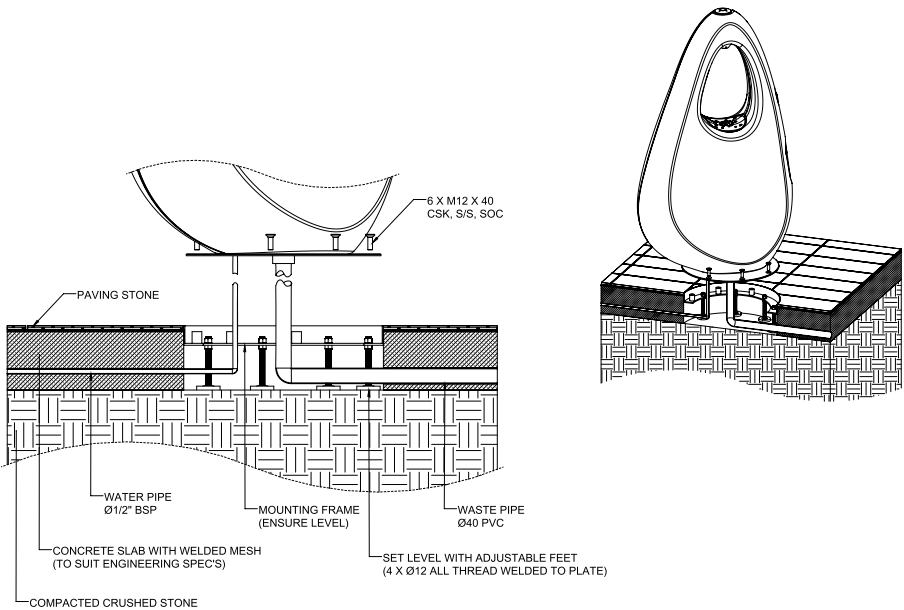
Mounting Plate



Mounting Frame

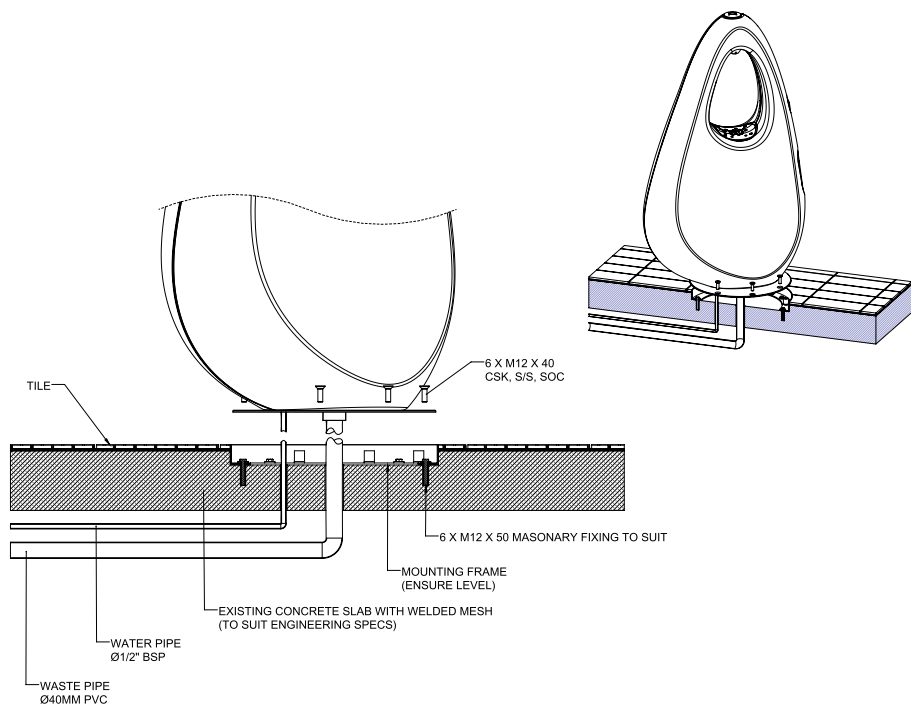


Installation Option A
Paved Surface



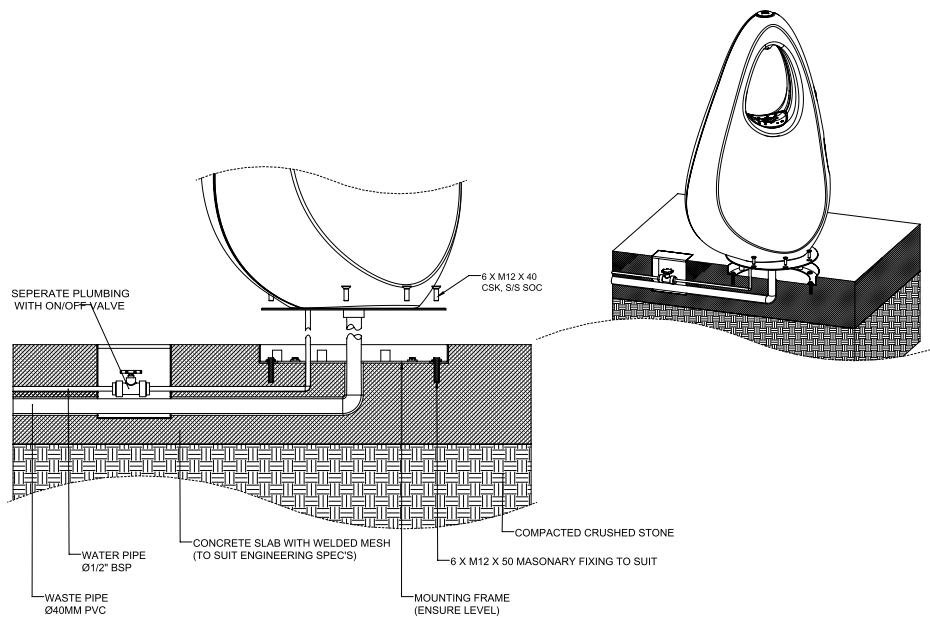
Note: Ensure fixing ring is set level.

Installation Option B Concrete Slab – Existing Building



Note: Ensure fixing ring is set level.

Installation Option C
Concrete Slab – New Build Parks and Gardens



Note: Ensure fixing ring is set level.

Contact

07 3382 7372

office@urbanff.com.au

5 Telford Circuit YATALA QLD 4207