

# FOUNTAINS | SURFACE MOUNTED VERSAFILLER - CHILLED

## SPECIFICATION SHEET



This surface mount hydration station combo features a completely contactless activation method. The bottle filler includes an electronic sensor for a contactless (touch free) activation and a 30 second shut off timer. The drinking fountain is activated via an infrared sensor below the nose.

Perfect for public buildings, gymnasiums, sports complexes, hospitals, schools, and offices.

### MODEL

Model: AC-P8EBFTY

SKU: DFAQVERSAHS

### DIMENSIONS

Height: 960mm

Width: 413mm

Depth: 473mm

### CERTIFICATIONS



### FEATURES

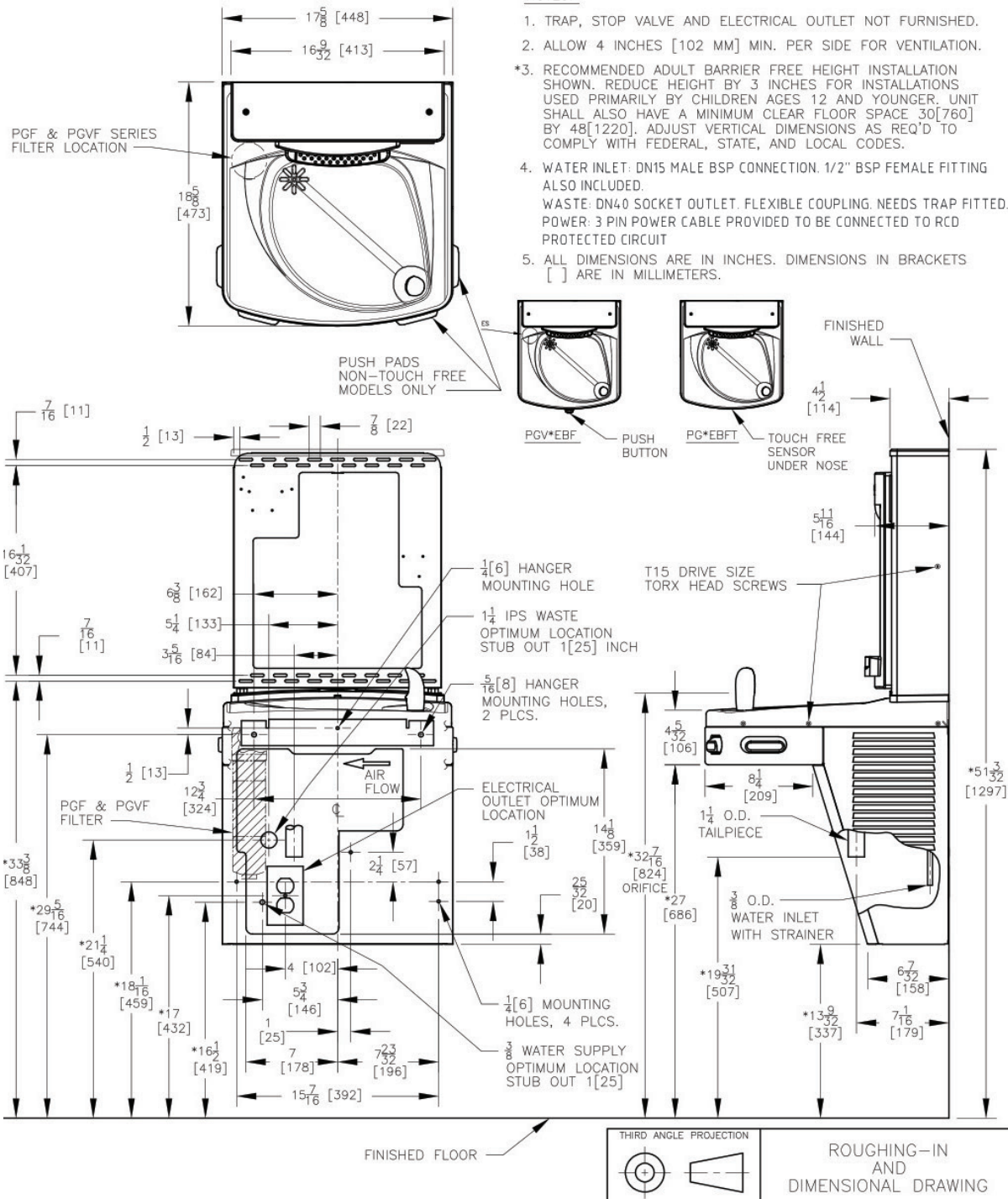
- + Drinking Fountain & Bottle Filler In One
- + Completely Contactless (Infrared Sensors)
- + High Efficiency Cooling System & Refrigerant R-134a
- + 30 L/h Chilling Capacity
- + Bottle Counter To Track Usage
- + Contains Antimicrobial Materials
- + Perfect For Schools, Sports Complexes, Hospitals, Gyms and Offices

### OPTIONS

- + Full Manual Activation
- + Non-Chilled Water
- + Quasar UVC-LED Filtration
- + Split Level

# FOUNTAINS | SURFACE MOUNTED VERSAFILLER - CHILLED

## TECHNICAL INFORMATION



# FOUNTAINS | SURFACE MOUNTED VERSAFILLER - CHILLED

## TECHNICAL INFORMATION

MODEL CODE	AC-P8EBFTY
Activation	Bottle Filler: Contactless (Infrared sensor) Drinking Fountain: Contactless (Downward facing infrared sensor)
Sensor Coverage	Up to 5cm (approx.)
Filtration	Filter (optional), Built-in 100 micron strainer
Auto-Off Water Flow	Yes
Water Connections	Inlet: 1/2" BSP connector, Drain: 40mm Female Socket (Not trapped)
Exterior	Antimicrobial ABS Plastic, Brushed Stainless Steel
Chassis	Heavy Duty Galvanised Steel
Dimensions	960(H) x 413(W) x 473(D)
Alcove Height	250 mm
Net Weight	31 kg
Power Supply	220-240V, 50/60 Hz
Cooling Performance	60 LPH Rated Capacity & Base Rate (10°C in 21°C amb. temp.)
Full Load Amps	2.2 A
Rated Watts	457 W
Energy System	Refrigeration is on only when in use or if water temp increases during long period of standby
Country of Origin	Mexico
Certifications	WaterMark, ANSI/NSF 61, CABO/ANSI A117.1, ADA, CE (LVD, EMC, RoHS), WRAS
Warranty	1 Year Full, 2 Years Parts Only