

**urban** + Fountains  
Furniture

**making life better.**

**+ about**

At **Urban+** we believe there is a better way to do business.

Our mission is to support the shift to a **circular economy** by supplying sustainable drinking fountains and street furniture that not only enhance public spaces but can remain in use for generations to come.

**+ how**

**create** products that last

**offer** customers a range of sustainability-focused programs

**reduce** waste entering landfill and drive water conservation



## contents page

- 6-7.**      **Our story**
- 8-9.**      **Our values & programs**
- 10-23.**    **Drinking fountains & refill stations**
- 24-29.**    **Seats**
- 30-33.**    **Picnic settings**
- 34-37.**    **Day beds**
- 38-41.**    **Bike racks**
- 42-45.**    **Outdoor showers**
- 46-49.**    **Tree grates & guards**
- 50-53.**    **Bollards & balustrading**
- 54-57.**    **Bins & bin enclosures**
- 58-61.**    **Dog park agility equipment**
- 62-69.**    **Brisbane City Council range**
- 70-71.**    **Custom projects**
- 72-73.**    **Our materials**
- 74.**        **Get in touch**







Custom Precast Concrete Seating  
Brisbane City Council, QLD

## Our story

### Family-founded since 2001

Urban+ was founded by Gary and Claire Allan in 2001. Gary's vision to craft (not just manufacture) products that could last, matched with Claire's desire to run a business that was meaningful beyond the products sold, created the Urban+ DNA – **'to make life better'**. In 2019, with a desire to take Urban+ to the next level, Claire & Gary brought on a new business partner, Simon Higgins, to help pave the way.

### Putting the planet first

Fast forward to today and Urban+ has completely shifted its focus to a purpose-led business with a circular business model, the perfect way to do good for our **customers**, our **planet**, and our **future generations**.

### Australian owned and operated

Urban+ is a proud Australian business. We understand Australia's needs, including the need to reduce waste and have built that into our product designs, business programs, and operations. Our goal is to keep the Australian manufacturing industry strong by paving the way in sustainable business practices.

### Approved supplier





## How does the circular economy work?



## Urban+ values

### + sustainability

We design products that last. To further stretch our product's lifespan for generations, we have created smart and sustainable programs to lead the way for our industry and drive the circular economy

### + product design

Our seamless design approach means the things you don't see are just as important as the things you do. We pride ourselves on visual aesthetic and match it equally with durability and function

### + craftsmanship

Delivering the highest quality crafted finishes. We're best in class with our fabrication process, functionality, and durability

## Our programs

- + Choose your Urban+ experience**

Select from our subscription, service & maintenance and ownership options
- + Restore + Refill program**

Join our restoration program and restore your Urban+ drinking fountain to like 'new'
- + Conservation commitment**

By choosing our products you are supporting waste reduction, water conservation and single-use plastic bottle elimination
- + Trade-in program**

Trade-in your old drinking fountain to keep it out of landfill and we will give you an allowance. We will also refurbish and gift the fountain to a charity of your choice
- + The 'O' initiative**

Engage your community and help combat single-use plastic bottles with the O initiative. This program uses the one-of-a-kind O fountain to help protect our environment from plastic waste

Find out more about our programs on our website [urbanff.com.au/our-programs/](https://urbanff.com.au/our-programs/)

'Plastic bottles are among the 10 most common rubbish items picked up on Cleanup Australia Day'



## Drinking fountains & refill stations



O fountain by Jessica Jane Illustration  
Newgate Estate, Victoria



# The O fountain

## Placemaking, community and experience wrapped in one

The **O fountain** combines form and function with art to create a stunning centrepiece for projects of all sizes. It's the brainchild of designer, Gretha Oost, who developed the fountain as a tool to help reduce the excessive use of single-use plastic bottles worldwide.



watermark  
certification



bottle  
refill



disabled  
accessible

Supplied as a blank white canvas, the O fountain can be painted by an artist of your choice. For more information on how to install this fountain and how to engage a local artist, see our downloadable resources on our website

[urbaff.com.au/product/the-o-fountain](http://urbaff.com.au/product/the-o-fountain)



# Drinking fountains

## Apollo 950 Drinking Fountain

The Apollo 950 is a state-of-the-art drinking fountain inspired by nature with a sleek, minimalist waterfall design.

Made from solid stainless steel this modern fountain is available with an optional signage/noticeboard back panel that can be easily updated with informative information or left as a decorative artwork feature. It can also be customised with an additional bottle refill point or reduced-height basin to make it disabled accessible.



### Dual Height Model

ADA Compliant + NSF Certified\*

SKU: DFA950

Height: 900mm

Width: 450mm



watermark certification\*



disabled accessible



Dulux powder coating



dual basins



### Signage Board Model

Signage board height/width is customisable + NSF Certified\*

SKU: DFA950SB

Height: 900mm

Height with signage: 1190mm

Width: 450mm



watermark certification\*



signage board



Dulux powder coating



### Artwork Panel Model

NSF Certified\*

SKU: DFA950

Height: 900mm

Width: 450mm



watermark certification\*



artwork



Dulux powder coating



### Etched Artwork Model

NSF Certified\*

SKU: DFA950

Height: 900mm

Width: 450mm



watermark certification\*



artwork



Dulux powder coating

\*Watermark & NSF Certification Pending



# Drinking fountains & refill stations

brand me!



## Apollo 280 Drinking Fountain

SKU: DFA280

Total Height: 900mm  
Clearance Height: 800mm  
Base: 191mm x 160mm



watermark certification



bottle refill



disabled accessible



Dulux powder coating

## Apollo 880 Drinking Fountain

SKU: DFA880

Total Height: 915mm  
Clearance Height: 846mm  
Base: 300mm x 200mm



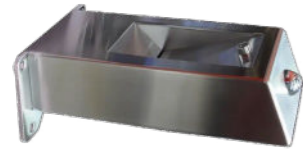
watermark certification



disabled accessible



Dulux powder coating



## Apollo 280 Wall Mounted Drinking Fountain

SKU: DFA280W

Total Height: Variable to suit  
Clearance Height: Variable to suit



watermark certification



disabled accessible



## Apollo 900 Drinking Fountain

SKU: DFA900

Total Height: 876mm  
Clearance Height: 775mm  
Base: 200mm x 100mm Tapered



watermark certification



disabled accessible



Dulux powder coating



## Apollo 300 Drinking Fountain

SKU: DFA300

Height: 835mm  
Width: 200mm



watermark certification



disabled accessible



Dulux powder coating



## BF200 Wall Mounted Water Bottle Refill Fountain

SKU: DFBF200W

Total Height: 353mm  
Width: 166mm



watermark certification



bottle refill



Dulux powder coating



## Apollo 400 Drinking Fountain

SKU: DFA400

Height: 895mm  
Clearance Height: 730mm  
Width: 165mm



watermark certification

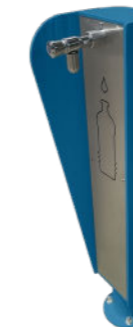


disabled accessible



Dulux powder coating

brand me!



## BF200 Water Bottle Refill Fountain

SKU: DFBF200

Total Height: 1050mm  
Width: 180mm x 250mm



watermark certification



bottle refill



Dulux powder coating

# Drinking fountains & refill stations



## BF200WM Wall Mounted Bottle Refill Multi Strip

SKU: DFBF200WM  
Options: 2 tap, 3 tap, 4 tap

Height: 155mm  
Width: 746mm | 1143mm | 1548mm



watermark certification



bottle refill



## BF200WM Wall Mounted Single Tap Bottle Refill

SKU: DFBF200WMS

Total Height: 155mm



watermark certification



bottle refill



## BF400P Water Bottle Refill Station

SKU: DFBF400P

Total Height: 1010mm  
Width: 114mm  
Depth: 309mm



watermark certification



bottle refill



recycled plastic



## BF400T Water Bottle Refill Station

SKU: DFBF400T

Total Height: 1010mm  
Width: 114mm  
Depth: 309mm



watermark certification



bottle refill



FSC certified timber



## Apollo 450 DDA Drinking Fountain

SKU:DFA450

Total Height: 1006mm  
Width: 200mm



watermark certification



Dulux powder coating



dog tap & bowl



disabled accessible



bottle refill



## PF400 Pet Drinking Fountain

SKU: DFPF400SURF

Total Height: 1000mm  
Width: 100mm  
Dog Bowl Height: 170mm



watermark certification



Dulux powder coating



dog tap & bowl



## PF450 Pet Drinking Station

SKU: DFPF450

Total Height: 1000mm  
Width: 200mm  
Depth: 112mm



watermark certification



Dulux powder coating



dog tap & bowl

## spare parts

Urban+ can supply all major spare parts.  
Contact [office@urbanff.com.au](mailto:office@urbanff.com.au) or **07 3382 7372**



# Drinking fountains & refill stations



## Popular options & add-ons

- + dog tap & bowl
- + stainless steel finish
- + galvanised steel finish
- + maintenance tap
- + catchment tray
- + Dulux powder coating
- + water filter
- + bottle refill
- + water bubbler
- + logo or message
- + AS1428 compliance
- + contactless activation



scan to access  
the Dulux colour chart  
- over 100 options!



## Custom projects | drinking fountains



### Modified to suit your needs

All of our standard products can also be modified to suit your unique application. As the manufacturer of these products, we are able to alter dimensions, substitute different materials or add/remove components from any item as desired. If you have any particular requirements or would like to modify versions of any model in our product range, simply contact us to discuss your needs with our team.



# Drinking fountains & refill stations | chilled



## CF200 Chilled Outdoor Drinking Fountain

SKU: DFCF200

Total Height: 900mm  
Clearance Height: 800mm  
Base: 191mm x 160mm



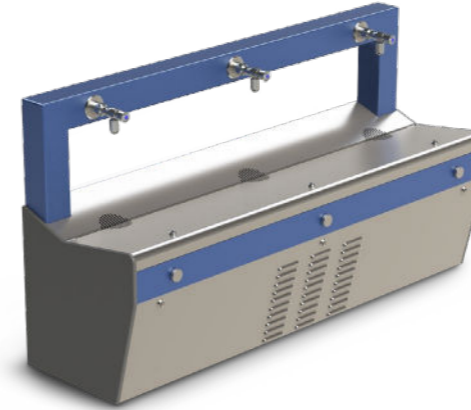
bottle  
refill



Dulux powder  
coating



chilled  
water



## CF400 Chilled Outdoor Drinking Fountain

SKU: DCF400

Total Height: 951mm  
Width: 1624mm  
Depth: 497mm



watermark  
certification



bottle  
refill



Dulux powder  
coating



chilled  
water



## Chilled VersaFiller Hydration Station

SKU: DFAQVERSAHS

Height: 960mm  
Width: 413mm  
Depth: 473mm



watermark  
certification



bottle  
refill



chilled  
water



contactless



## Chilled Bottle Filler - Wall Recessed

SKU: DFAQWRBF

Height: 1035mm  
Width: 502mm  
Depth: 46mm



watermark  
certification



bottle  
refill



chilled  
water



contactless



## Chilled Hydration Station - Wall Recessed

SKU: DFAQWRBF

Height: 1143mm  
Width: 502mm  
Depth: 483mm (287mm recessed)



watermark  
certification



bottle  
refill



chilled  
water



contactless



CF400 Chilled Outdoor Drinking Fountain



# Seats



Alperton Bench Seat with Arm Rests



# Seats



## Alperton Bench Seat

SKU: SEATALPERT (no arm rest) | SEATALPERT2ARM (with 2 arm rests)

Height: 500mm  
Length: 1750mm

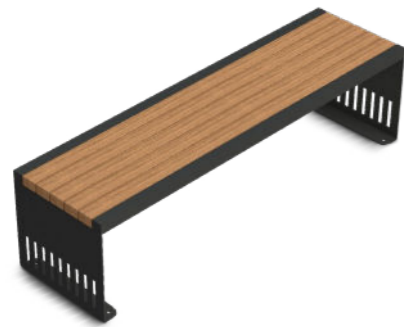
- arm rests
- cast aluminium frame
- colour options
- FSC certified timber
- surface mounted



## Aston Sun Lounger

Please enquire for more details

- solid steel frame
- colour options
- Dulux powder coating
- FSC certified timber
- surface mounted



## Aston Bench Seat

SKU: BENCHASTON

Height: 480mm  
Width: 501mm  
Length: 1800mm

- solid steel frame
- colour options
- Dulux powder coating
- FSC certified timber
- surface mounted



## Basic Bench Seat

SKU: BENCHBASIC

Seat Height: 460mm  
Length: 1750mm

- solid steel frame
- colour options
- Dulux powder coating
- FSC certified timber
- surface mounted



## Aston Double Seat

SKU: SEASTONDBL

Height: 450mm  
Width: 1112mm  
Length: 1800mm

- solid steel frame
- colour options
- Dulux powder coating
- FSC certified timber
- surface mounted

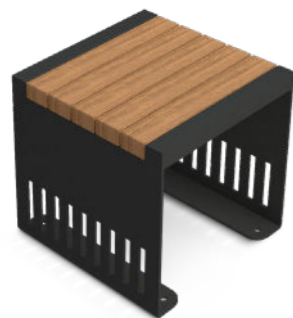


## City Bench Seat Wall Mounted or Standard

SKU: SEATCITY - WM Seat | SEATCITYSURF - SM Seat

Height: 500mm  
Width: 450mm  
Length: 1600mm

- arm rests
- solid steel frame
- wall mounted
- FSC certified timber
- surface mounted



## Aston Stool

SKU: STOOLASTON

Height: 480mm  
Width: 450mm  
Length: 450mm

- solid steel frame
- colour options
- Dulux powder coating
- FSC certified timber
- surface mounted



## SB1 Bench Seat

SKU: BENCHSB1

Height: 485mm  
Width: 519mm  
Length: 1703mm

- solid steel frame
- colour options
- Dulux powder coating
- FSC certified timber
- surface mounted



# Seats

## SB3 Bench Seat

SKU: BENCHSB3

Height: 486mm  
Width: 519mm  
Length: 1700mm



solid steel frame



Dulux powder coating



surface mounted

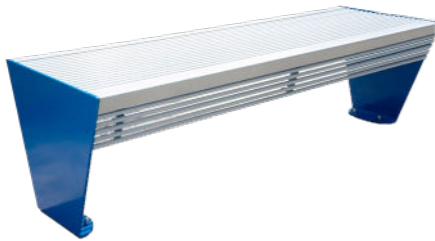


steel round bar

## SB5 Bench Seat

SKU: BENCHSB5

Height: 486mm  
Width: 536mm  
Length: 1750mm



solid steel frame



Dulux powder coating



surface mounted

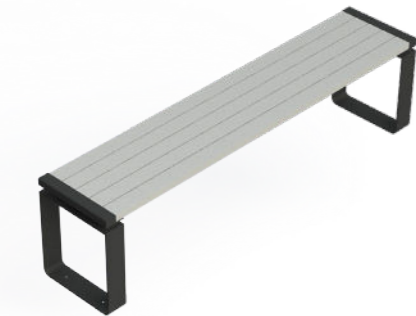


steel round bar

## Tully Bench Seat

SKU: BENCHTULLY

Height: 461mm  
Width: 376mm  
Length: 1800mm



solid steel frame



Dulux powder coating



surface mounted



aluminium battens

## Tully Seat

SKU: SEATTULLY2ARM

Height: 453mm  
Width: 536mm  
Length: 1624mm



solid steel frame



Dulux powder coating



surface mounted



aluminium battens

## Popular options & add-ons

- + anti-graffiti coating
- + recycled plastic battens
- + FSC certified timber
- + DWD timber coating
- + Dulux powder coating
- + galvanised steel finish
- + skateboard lugs
- + custom lengths
- + logo or message
- + aluminium battens



scan to access the Dulux colour chart - over 100 options!



Custom Seat



## Picnic settings

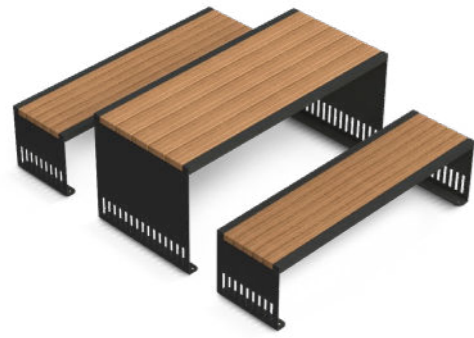


PT03 Picnic Table





# Picnic settings



## Aston Picnic Table

SKU: PTASTON

Seats: 6  
Table: 800mm H x 826mm W x 1800mm L  
Seat: 480mm H x 450mm W x 1800mm L



## PT03 Picnic Table

SKU: PT03

Seats: 6  
Table: 807mm H x 870mm W x 1750mm L  
Seat: 504mm H x 1750mm L



## BT01 Picnic Table

SKU: BT01 (with timber battens)

Seats: 6-8  
Table & seats: 757mm H (above ground) x 1800mm W x 1800mm L



## PT06 Picnic Table

SKU: PT06

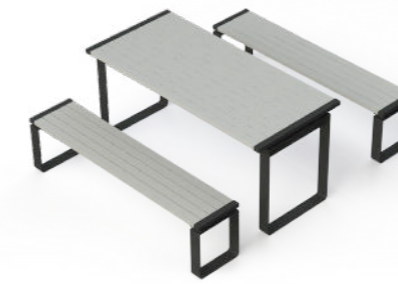
Seats: 6-8  
Table: 800mm H x 805mm W x 1800mm L  
Seat: 450mm H x 440mm W x 1800mm L



## PT02 Picnic Table

SKU: PT02 (with timber battens)

Seats: 6-8  
Table: 800mm H x 803mm W x 2000mm L  
Seat: 450mm H x 438mm W x 2000mm L



## Tully Picnic Table

SKU: PTTULLY

Seats: 6  
Table: 808mm H x 820mm W x 1800mm L  
Seat: 461mm H x 376mm W x 1800mm L



## PT02 Picnic Table

SKU: PT02-A (with aluminium battens)

Seats: 6-8  
Table: 800mm H x 803mm W x 2000mm L  
Seat: 450mm H x 438mm W x 2000mm L



## Popular options & add-ons

- + aluminium battens
- + recycled plastic battens
- + FSC certified timber
- + custom lengths
- + logo or message
- + galvanised steel finish
- + skateboard lugs
- + DWD timber coating
- + Dulux powder coating



scan to access the Dulux colour chart - over 100 options!







## Day beds



Custom Day Bed





# Days beds

## Aston Cabana Day Bed

Please enquire for more details

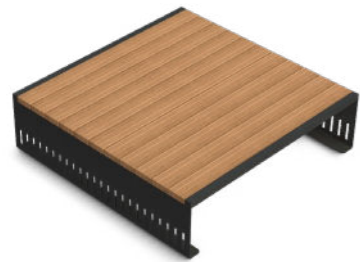


- strong aluminium frame
- colour options
- surface mounted
- FSC certified timber

## Aston Day Bed

SKU: DBASTON

Height: 450mm  
Width: 1697mm  
Length: 1692mm



- strong aluminium frame
- colour options
- surface mounted
- FSC certified timber

## DB06 Day Bed

SKU: DAYBEDDB06

Height: 440mm  
Width: 1800mm  
Length: 1800mm



- strong aluminium frame
- colour options
- surface mounted
- FSC certified timber

## Popular options & add-ons

- + aluminium battens
- + recycled plastic battens
- + FSC certified timber
- + custom lengths
- + logo or message
- + galvanised steel finish
- + skateboard lugs
- + DWD timber coating
- + Dulux powder coating



scan to access the Dulux colour chart - over 100 options!



DB06 Day Bed





## Bike racks



Armor Single Bike Rack



# Bike racks



## Armor Single Bike Rack

SKU: BIKEARMOR

Height: 880mm  
Width: 900mm



stainless steel



surface mounted



## Tully Single Bike Rack

MODEL: BIKETULLY

Height: 986mm  
Width: 340mm



solid steel frame



surface mounted



Dulux powder coating



bike logo



## Aston Multi Bay Bike Rack

SKU: BIKEASTONMULTI

Height: 806mm  
Width: 500mm  
Length: 1624mm



solid steel frame



surface mounted



Dulux powder coating



bike logo



variable bay options

## Popular options & add-ons

- + logo or message
- + galvanised steel finish
- + stainless steel finish

+ Dulux powder coating



scan to access the Dulux colour chart - over 100 options!



## Aston Single Bike Rack

SKU: BIKEASTON

Height: 1006mm  
Width: 134mm  
Length: 340mm



solid steel frame



surface mounted



Dulux powder coating



bike logo



## Curved Single Bike Rack

SKU: BIKECURVED

Height: 1000mm  
Width: 748mm



stainless steel



surface mounted







## Outdoor showers

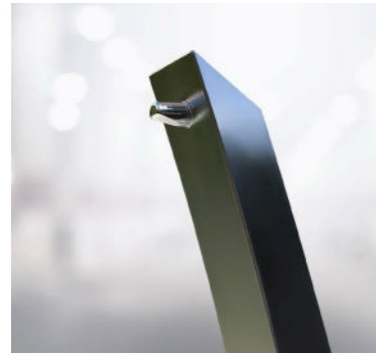


Custom Surfboard Showers  
Busselton, Western Australia





# Outdoor showers



## Eco Shower

SKU: SHECO

Height: 2207mm

Width: 155mm



fixed inground



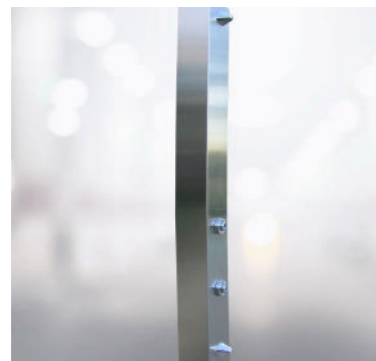
316 stainless steel



timed water activator buttons



epoxy wet spray finish



## SS150 Shower

SKU: SHSS150 (single shower)

Height: 2200mm

Width: 162mm



fixed inground



316 stainless steel



timed water activator buttons



satin finish

## Popular options & add-ons

- + extra shower head
- + foot shower combination
- + maintenance tap
- + hand rails
- + electropolish finish
- + surface mounted



Eco Shower





## Tree grates & guards



Custom Tree Grate





# Tree grates & guards

## Tree Grates & Frames

SKU: GR12X12TG

Standard frame sizes: FR12x12, FR12x16, FR16x16, FRCUSTOM  
Standard centre cut out: 380mm diameter



strong laser cut steel



frames to suit



5 standard pattern choices

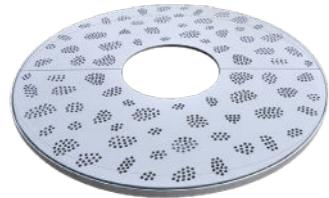


Dulux powder coating

## Round Tree Grates & Frames

SKU: GR1600ROUND (1600mm diameter)  
GR1200ROUND (1200mm diameter)

Standard frame sizes: 1200mm or 1600mm  
Standard centre cut out: 380mm diameter



strong laser cut steel



frames to suit



5 standard pattern choices



Dulux powder coating

## KP Guard

Please enquire for more details



solid steel frame



Dulux powder coating



## Popular options & add-ons

- + custom sizes
- + custom patterns
- + quick release cam locks
- + footpath off set grates
- + certified load rated to AS3996
- + illuminated grates
- + anti-slip
- + split frames for existing trees
- + Dulux powder coating



scan to access the Dulux colour chart - over 100 options!



Tree Grate & Frame





## Bollards & balustrading

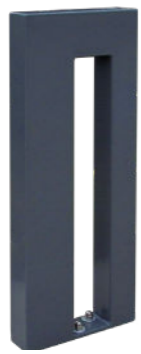


SS24 Balustrading





# Bollards & balustrading



## Edge Bollard

SKU: BOLLEDGE

Height: 880mm  
Width: 900mm



RHS solid construction



surface mounted



Dulux powder coating

colour options



## SS24 Balustrading

SKU: BALUSS24-2.4

Height: 1200mm  
Length: 2400mm



304 stainless steel



surface mounted



satin finish



custom sizes



fixed inground



Custom Balustrading





## Bins & bin enclosures



Aston 70L Bin





# Bins & bin enclosures



## Aston 70L Bin

SKU: BINAST-PCTIMB (powder coat body/timber battens)

Height: 1056mm  
Width: 430mm  
Length: 575mm



solid steel frame



aluminium battens



FSC certified timber



Dulux powder coating



## Tully Bin Enclosure - 120L or 240L

SKU: BINTULLY240 (240L wheelie bin) | BINTULLY120 (120L wheelie bin)

Height: 1123mm  
Width: 891mm  
Length: 740mm



solid steel frame



aluminium battens



Dulux powder coating



## Aston 240L Bin Enclosure

SKU: BINAST-GALALL (galvanised body/aluminium battens)

Height: 1318mm  
Width: 745mm  
Length: 849mm



solid steel frame



aluminium battens



FSC certified timber



Dulux powder coating



## Manly Dual Bin Enclosure 240L

SKU: BINMDUAL-240TIM

Height: 1385mm  
Width: 915mm  
Length: 1580mm



stainless steel



aluminium battens



FSC certified timber



Dulux powder coating



## Civic 90L Bin

SKU: BINCIVIC90L

Height: 1060mm  
Length: 573mm  
Depth: 430mm



strong aluminium frame



FSC certified timber



Dulux powder coating



## Doggie Dinnie - 55L, 120L or 240L

Please enquire for more information



solid steel frame



Dulux powder coating



## Civic 240L Wheelie Bin Enclosure

SKU: BINCIVIC240L

Height: 1353mm  
Length: 728mm  
Depth: 850mm



strong aluminium frame



FSC certified timber



Dulux powder coating

## Popular options & add-ons

- + anti-graffiti coating
- + recycled plastic battens
- + FSC certified timber battens
- + compostable dog bag dispenser
- + aluminium battens
- + galvanised steel finish
- + Dulux powder coating



scan to access the Dulux colour chart - over 100 options!







## **Dog park agility equipment**





# Dog park agility equipment



## Dog Double Bar Jump

SKU: DOGDOUBJUMP

Height: 449mm above ground  
Width: 1197mm



solid steel construction



colour options  
Dulux powder coating



fixed inground



## Dog Tunnel

SKU: DOGTUNNEL

Height: 723mm  
Width: 750mm  
Length: 1520mm



solid steel construction



colour options  
Dulux powder coating



fixed inground



anti-slip finish



## Dog Hoop

SKU: DOGHOOP

Height: 997mm  
Width: 795mm  
OD centre hole: 500mm



solid steel construction



colour options  
Dulux powder coating



fixed inground



## Dog Weave Poles

SKU: DOGWEAVEPOLE

Height: 1023mm (above ground)  
+ 60 OD pipe



solid steel construction



colour options  
Dulux powder coating



fixed inground



## Dog Podium

SKU: DOGPODIUM

Height: 600mm  
Width: 480mm  
Length: 1600mm



solid steel construction



colour options  
Dulux powder coating



fixed inground



anti-slip finish



## Pyramid Ramp

SKU: DOGPYRAMID

Height: 975mm  
Width: 495mm  
Length: 2000mm



solid steel construction



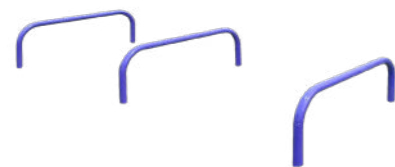
colour options  
Dulux powder coating



fixed inground



anti-slip finish



## Dog Single Bar Jump

SKU: DOGSINGLEJUMP

Height: 309mm (above ground)  
Width: 1197mm



solid steel construction



colour options  
Dulux powder coating



fixed inground



## Table Dog Ramp

SKU: DOGTABLERAMP

Height: 872mm  
Width: 495mm  
Length: 3126mm



solid steel construction



colour options  
Dulux powder coating



fixed inground



anti-slip finish





## Brisbane City Council range







BCC Drinking Fountain

**Urban+** are one of **Brisbane City Council's** approved suppliers of street and park furniture.

We manufacture and supply selected products to both BCC as well as contractors undertaking council-approved urban renewal projects throughout the city. In doing so, we frequently liaise with construction companies that are carrying out the work.

All furniture is made in accordance with BCC specifications.

We also undertake a variety of custom work for **Brisbane City Council.**





BCC Concrete Urban Stool

The **BCC concrete stools** are made as per BCC Specifications (BSD-7204). A customised lifting point is used for ease of installation and hidden by insertion of a stainless steel top cap once in place.

- + Coloured precast concrete
- + Variety of colours available
- + Allthread (to be chemset into fixing pad)

**The end result is a stunning contemporary modern looking stool.**



**BCC Concrete Urban Stool**

MODEL: BSD-7204

Height: 450mm

Width: 600mm





# Brisbane city council range



## BCC Bench Seat

MODEL: BSD-7201 (standard seat)  
BSD-7202 (public transport seat)

Height: 648mm  
Length: 1750mm



arm rests



solid steel frame



FSC certified timber



surface mounted



## BCC Light Pole

MODEL: BSD-11004

Height: 3000mm

\*Luminaire not included



## BCC Bicycle Racks

MODEL: BSD-5051 (single bay), BSD-5052 (multi bay)

Single Bay: 800mm x 810mm

3 Bay: 800mm x 963mm

4 Bay: 800mm x 1173mm

5 Bay: 800mm x 1456mm



316 stainless steel



variable bay options



surface mounted



## BCC Timber Post Bubbler

MODEL: BSD-10306

Dimensions: as per BSD-10306



water bubbler



dog tap & bowl



FSC certified timber



## BCC Bollards

MODEL: BSD-7096 (removable), BSD-7095 (fixed)

Removable bollard

Height: 1000mm (plus inground), as per BSD drawing 7096

Fixed bollard

Height: 1000mm, as per BSD drawing 7095



316 stainless steel



## BCC Tree Guards

MODEL: BSD-9072

Standard Guard Size: 1600mm x 472mm (BSD-9072) to fit standard BCC Tree Grates



solid steel frame



## BCC Drinking Fountain

MODEL: BSD-7331

Dimensions: as per BSD-7331



316 stainless steel



bottle refill



dog tap & bowl



## BCC Tree Grates

MODEL: BSD-9071

Standard Grate Sizes: 1600mm x 1600mm and 1200mm x 1600mm  
Center Cut Out: 380mm diameter



strong laser cut steel



frames to suit



'At Urban+ we pride ourselves on designing and manufacturing the highest quality product.'

It is in our brand DNA and we do it to make products last'

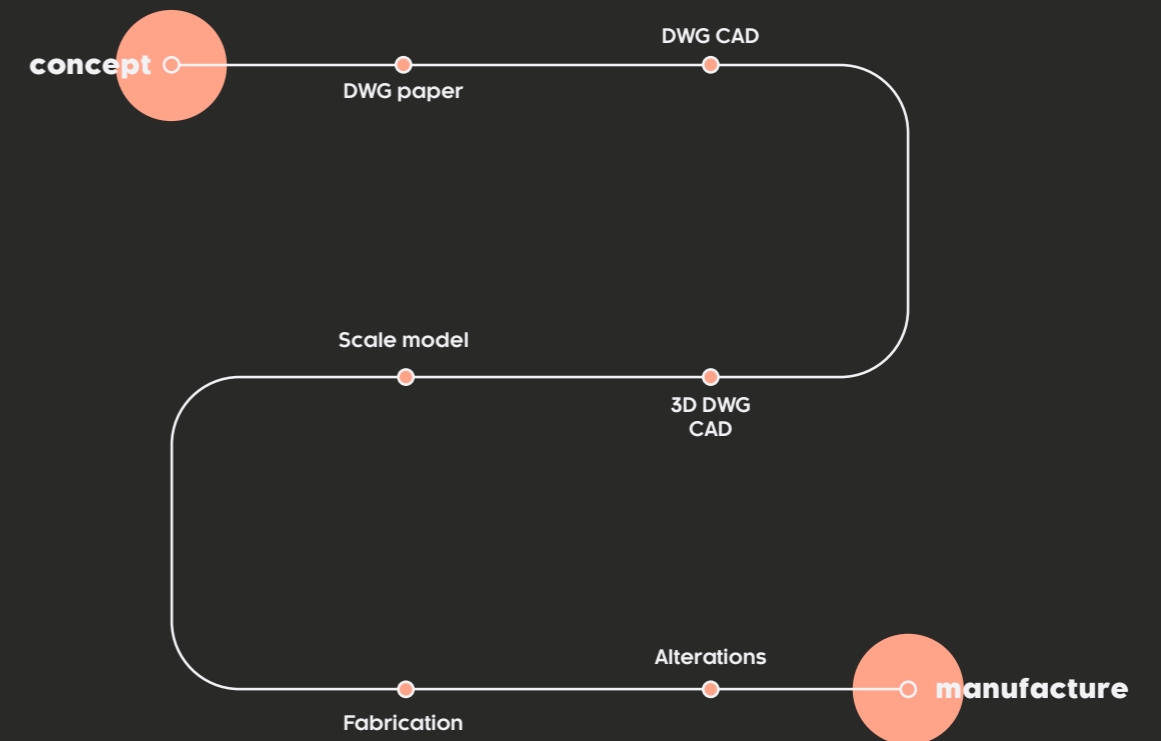
## Custom projects of all sizes

At Urban+ we understand all outdoor spaces are unique, which is why we offer customised solutions for projects of any size.

Our team work with you from concept right through to manufacturing to ensure your project vision and requirements are met every step of the way.

Visit our website to see past projects  
[urbanff.com.au](http://urbanff.com.au)

## How it works



## Past projects

Custom outdoor seat design for Brisbane City Council





## Our Materials



### Thinking ahead

#### - sustainable products

We are on a mission to produce the most sustainable products on the market. After all, the circular economy only works if we replace the finite resources we take from the Earth.

When you purchase an **Urban+** product you can feel confident knowing that all timber is FSC certified which means that it comes from responsibly managed forests. The timber is then expertly treated and double-stained for durability and enhanced natural appearance.

All metals used have also been carefully selected to maximise the life expectancy of the product. By doing this, we are able to keep our products in use for longer and minimise ongoing maintenance.





"The circular economy isn't about one manufacturer changing one product, it is about all of the interconnected companies and governments that form our infrastructure and economy coming together... it's about rethinking the operating system itself."

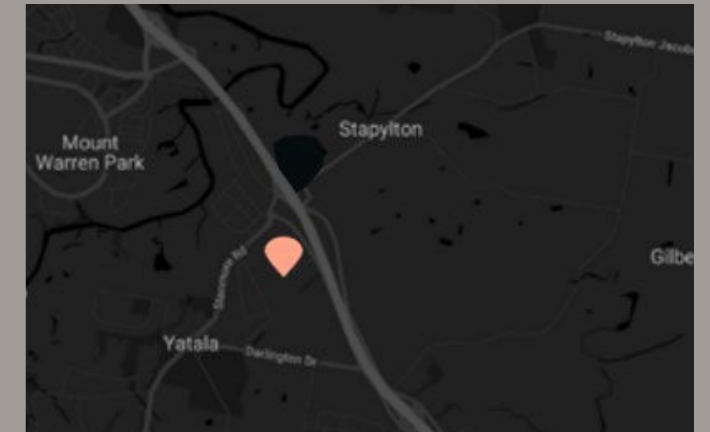
Ellen MacArthur

## Get in touch

### Head office

- A.** 5 Telford Circuit YATALA QLD 4207
- E.** office@urbanff.com.au
- P.** 07 3382 7372
- W.** urbanff.com.au

\*Shipping available worldwide, contact head office for international enquiries



### Australian distributors

#### Woodlands | Western Australia

- A.** 34 Bainbridge Mews CURRAMBINE WA 6028
- E.** andrew@woodlandsf.com.au
- P.** 0412 429 767

#### Crisp Ikin | Tasmania

- A.** 3 Pear Avenue, Derwent Park TAS 7009
- E.** sales@crispikin.net.au
- P.** 03 6272 7386

### International distributors

#### Fel Group | New Zealand

- A.** 373 Neilson Street PENROSE NZ 1642
- E.** cath@felgroup.co.nz
- P.** + 64 9 526 5660

#### Fabri-Technic Engineering & Trading Co., Ltd. | Hong Kong

- A.** 17/F Wing Wah Ind Building 677 King's Rd NORTH POINT HONG KONG
- E.** enquiry@fabri-technic.com
- P.** + 852 2815 8388





**[urbanff.com.au](http://urbanff.com.au)**