

## Hydration Solutions for Schools and Clubs

Making life better

[urbanff.com.au](http://urbanff.com.au)



At **Urban+** we believe there is a better way to do business.

Our mission is to support the shift to a **circular economy** by supplying sustainable drinking fountains and street furniture that not only enhance public spaces but can remain in use for generations to come.

### **CF400 Multi Bank Chiller Drinking Fountain and Bottle Filler**

The new CF400 chilled water fountain has been specifically designed for high volume use in places such as schools or sporting clubs.

The CF400 is a modern looking, easy to maintain fountain, designed with circularity principles for future sustainability. Urban+ have incorporated material choices and design features to ensure the CF400 performs not only during its intended design life but beyond, by being reused/ recycled/refurbished or re purposed easily, keeping materials in use for longer and out of landfill.

The CF400 comes with a variety of options including wall mounted, floor mounted, with or without chilling capacity, premium personalisation signage, additional side basin access to meet AS1428 requirements and the choice to have only 2 or 3 tap/bubbler combinations.





### CF400 - Standard Wall Mounted with Signage Option (displayed)

Can be mounted at any height to meet primary and high school requirements

#### options



bottle  
refill



water  
filter



maintenance  
tap



contactless



logo or  
message



### CF400 - Floor Mounted with Signage Option (displayed)

Can be mounted at any height to meet primary and high school requirements

#### options



bottle  
refill



water  
filter



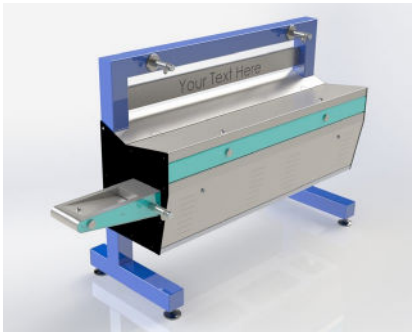
maintenance  
tap



contactless



logo or  
message



### CF400-B - Floor or Wall Mounted with Signage Option (displayed)

Complete with AS1428 basin/bottle filler access

#### options



bottle  
refill



water  
filter



maintenance  
tap



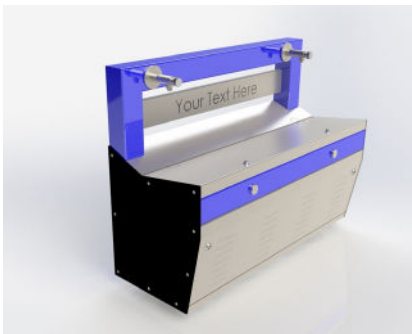
contactless



logo or  
message



disabled  
accessible



### CF400 2 Tap - Floor or Wall Mounted with Signage Option (displayed)

For smaller spaces/less students

#### options



bottle  
refill



water  
filter



maintenance  
tap



contactless



logo or  
message

Scan here to view our  
Urban+ for School's range





# Drinking fountains & refill stations

brand me!



## Apollo 280 Drinking Fountain

SKU: DFA280

Total Height: 900mm  
Clearance Height: 800mm  
Base: 191mm x 160mm



disabled accessible



Dulux powder coating



## Apollo 450 DDA Drinking Fountain

SKU: DFA450

Total Height: 1006mm  
Width: 200mm



disabled accessible



Dulux powder coating



dog tap & bowl



bottle refill

brand me!



## BF200 Water Bottle Refill Fountain

SKU: DFBF200

Total Height: 1050mm  
Width: 180mm x 250mm



bottle refill



Dulux powder coating



## BF200 Wall Mounted Water Bottle Refill Fountain

SKU: DFBF200W

Total Height: 353mm  
Width: 166mm



bottle refill



Dulux powder coating



## Chilled VersaFiller Hydration Station

SKU: DFAQVERSAHS

Height: 960mm  
Width: 413mm  
Depth: 473mm



bottle refill



chilled water



contactless

## spare parts

Urban+ can supply all major spare parts.

Contact [office@urbanff.com.au](mailto:office@urbanff.com.au)



**"By 2050 there will be  
more plastic than fish in our oceans"**

**- United Nations'**



**BF200WM Wall Mounted  
Single Tap Bottle Refill**

SKU: DFBF200WMS

Total Height: 155mm



bottle  
refill



**BF200WM Wall Mounted  
Bottle Refill Multi Strip**

SKU: DFBF200WM

Options: 2 tap, 3 tap, 4 tap

Height: 155mm

Width: 746mm | 1143mm | 1548mm



bottle  
refill



**BF400P Water Bottle Refill Station**

SKU: DFBF400P

Total Height: 1010mm

Width: 114mm

Depth: 309mm



bottle  
refill



recycled  
plastic



**BF200 Wall Mounted  
Bottle Refill with Catchment Tray**

SKU: DFBF200WC

Height: 565mm

Width: 190mm



bottle  
refill



colour  
options  
Dulux powder  
coating

**Popular options  
& add-ons**

- + water filter
- + bottle refill
- + water bubbler
- + logo or message
- + dog tap & bowl
- + catchment tray

- + stainless steel finish
- + galvanised steel finish
- + maintenance tap
- + Dulux powder coating



scan to access  
the Dulux colour chart  
- **over 100 options!**



## Do you need to buy NEW?

As part of our commitment to circularity, **Urban+** always asks our customers, **do you need to buy new?**

Most schools still have reasonable, functioning hardware that can still be used when upgrading their facilities. It is often more **cost effective, time efficient** and **environmentally friendly** to retrofit existing units with upgraded hardware than to throw them in to the waste and start anew. **Urban+** is able to offer a complete range of solutions from retrofitting existing hardware, improving and upgrading facilities, to offering a new purpose designed **solution for your school**.

Upgrades can be cost effective and the perfect solution for your school



Add a bottle refill to an existing bubbler!



Retrofit and use existing hardware



### Need more bottle fillers?

Utilising existing troughs with bubblers only, Urban can install a bottle filler strip to add instant refill solutions utilising the existing plumbing and drainage.

#### Solution 1

### Need chilled water?

Utilising existing troughs and bubblers, Urban can install a chiller unit to chill existing water bubblers. Why not add some bottle refill strips at the same time to maximise the use of your chiller, while still utilising existing plumbing and drainage and minimising the civil works..

#### Solution 2

### Need vandal resistant tapware?

If you have a small existing chilled unit that has a broken goose neck bottle filler. Urban can add a strong, single tap bottle filler using your existing chiller unit to keep it working for years to come.

#### Solution 3



## Why choose Urban+

- + Australian Made products – all products are manufactured in our factory located in Yatala, QLD and distributed nationally
- + All drinking fountains are WaterMark certified
- + ISO Quality Management System certified
- + Commercial grade
- + Built-in vandal resistance
- + Disabled accessible options to meet AS1428 requirements
- + Product branding options
- + Choose from Dulux's full powder coat colour range
- + Customisation of all our standard products allowed
- + Full custom design service available
- + Service & Maintenance and Refurbishment services offered
- + Product leasing option
- + Trade in Program



**urban** + Fountains  
Furniture

**Any Questions or to Order**

**E: [office@urbanff.com.au](mailto:office@urbanff.com.au)**

**P: 07 3382 7372**

**[urbanff.com.au](http://urbanff.com.au)**