

## CARE AND MAINTENANCE

1. Regular washing down of the exterior surface will help prolong the lustre of the painted finish.
2. Painted fountains that become dull due to prolonged exposure to direct sunlight can be restored with an appropriate surface polish.
3. To maintain the exterior of the fountain carefully remove any loose surface deposits with a wet sponge. Use a soft (non abrasive) brush and dilute a solution of mild detergent (eg. PH-neutral liquid hand washing detergent in warm water (DO NOT use solvents) to remove dust, salt and other deposits. Rinse thoroughly with clean fresh water to remove residues. To remove any Tea Staining on Stainless Steel surfaces we recommend Drifter Hull cleaner and stain remover.
4. Do not use any solvents on the surface as this will adversely affect the longevity of the painted finish.
5. Surface scratches and inconsistencies can be touched up using Dulux touch up paint. Most colours can be matched.
6. We recommend the use of anti-seize paste on all external fixing bolts to maintain ease of access over long periods of time.
7. Check the fountain internal connections, water flow and all external access screws and fixing bolts regularly (every 3mths) to ensure they are tight.
8. In high debris areas (parks, children's playgrounds etc) where there may be sand or bark or a lot of leaf litter that may be placed in to the basin, check regularly and remove debris to prevent blocking of the basin or the waste outlet pipe.
9. After any interruption to the water supply, always flush the lines prior to reconnection to the fountain to prevent debris entering the valve.

## WARRANTY

All Urban Fountains and Furniture outdoor drinking fountains are covered by a 2 year manufacturers guarantee against faulty materials and workmanship under normal wear and tear conditions.

All fountains are date stamped at the time of despatch.

This warranty will only apply under the following conditions:

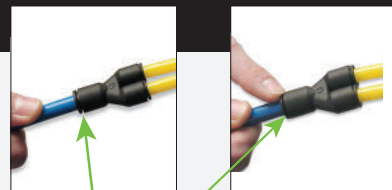
- The fountain was installed in accordance with our installation instructions that are supplied with every fountain.
- The fountain was installed by a licensed plumber
- The water lines have been thoroughly flushed prior to connection to the fountain
- The fountain has not been tampered with or repaired in any way without obtaining prior approval from our factory specialists first.
- The fountain has been serviced and maintained as per our supplied instructions.

## ATTENTION PLUMBERS

This fountain uses "Push In Fittings".

Failure to release these fittings correctly will result in leakage.

These quick release fittings allow instant connection and disconnection without the use of spanners.



Push outer ring in to release tube from fitting

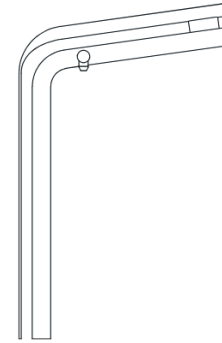
urban Fountains + Furniture

## Drinking Fountains

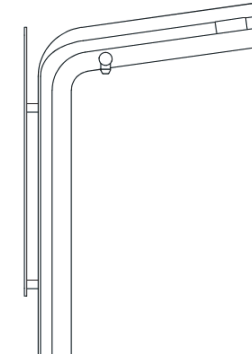
MODELS: A950, A950\_ART, A950\_NB

urban Fountains + Furniture

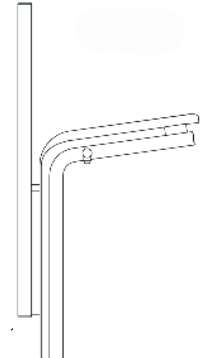
## INSTALLATION, OPERATION AND MAINTENANCE INSTRUCTIONS



Model: A950



Model: A950\_Art



Model: A950\_NB

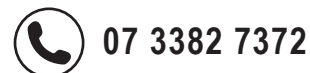
## SPECIFICATIONS

- ▶ 1/2" bsb water inlet (15mm)
- ▶ 40mm waste outlet
- ▶ Maximum Temperature: 40°C
- ▶ Maximum Water Pressure: 800 kpa
- ▶ Complies with WMTS-105 Technical Specification. Appliances - Beverage dispensers and icemakers
- ▶ Complies with AS/NZS 4020 Testing of products in contact with drinking water



WM-080042  
WMTS-105

## CUSTOMER SERVICE



# A950 DRINK FOUNTAIN - INSTALLATION DETAILS

## GENERAL NOTES

ENSURE FOUNTAIN IS CLEAN OF CONCRETE SLURRY OR SPRAY WHEN INSTALLED TO PREVENT STAINING OR DAMAGE TO APPLIED FINISHES.

PRE-FLUSH WATER LINE OF ALL DEBRIS BEFORE CONNECTING TO FOUNTAIN.

FOUNTAIN IS TO BE MOUNTED VERTICAL

ALL INFORMATION & DRAWINGS ARE INDICATIVE ONLY.

## IMPORTANT NOTES:

1. Water Pressure cannot exceed 8BAR. (116 PSI)
2. Fountain is supplied with a pressure reducing valve
3. A "P" OR "S" TRAP is recommended to be installed to help avoid smells arising from the drainage .
4. The bubbler uses a programmable solenoid valve. Please refer to attached notes for how to adjust the flowtime adjustment if required
5. The solenoid valve uses a 9V battery. recommended replacement period 3-5 years, access via underside panel
6. Bottle filler flow rate can be adjusted if required, use supplied custom thumb screw (attached to the access door)
7. Bottle filler stuffing box removal spanner is attached to the access door
8. All plumbing and installation to conform to local plumbing / installation codes of this nature.

\*PLEASE SEE ANNEX A & B

## TROUBLESHOOTING

<b>There is restricted or no water flow?</b>	Check the inlet lines for kinks in the tubing. Ensure the water supply valve is fully open. Check the water pressure regulator is open.
<b>The water continues to drip / run after shutting off?</b>	The most common cause of water not shutting off is a leaking valve and is due to the lines not being flushed adequately and debris getting in to the valve through the inlet and sitting on the rubber seals. To check the valve it will need to be removed. Please contact this office for details instructions to ensure this is done correctly.
<b>The water flow is shooting over the top of the basin or is not high enough and trickling over the nozzle?</b>	The water pressure is too high / low and needs to be adjusted via the water flow regulator so it flows in to the catchment area of the basin.
<b>Leaking from the internal connections?</b>	Check that they have been installed correctly. (all fountains are leak tested prior to leaving the factory). Have the push in fittings been pulled? (see instructions on how to connect and disconnect push in fittings). Is the water inlet connection tight?

## SPARE PARTS

 8mm "Y" Fitting	reorder code: →	PL1003	 Maintenance Tap	reorder code: →	PL1034
 1/4" Legris Fitting	reorder code: →	PL1030	 Bottle Filler	reorder code: →	CM1125
 1/4 x 90° Fitting	reorder code: →	ELB 1/4" x 90	 Urban Push tap with Paw print	reorder code: →	CM1125-DT
 3/8 x 90° Fitting	reorder code: →	ELB 3/8" x 90	 Enware Valve	reorder code: →	DFX.A280.VALVE.ASSY
 8mm Straight Male 1/4" BSPT	reorder code: →	PL1011	 Urban "T" Valve	reorder code: →	CM1110
 8mm Straight Male 3/8" BSPT	reorder code: →	PL1035	 Pressure Control Valve	reorder code: →	PL1114
 5/16" Hose-Blue	reorder code: →	PL1108	 15mm Mini Ball Valve	reorder code: →	PL1019
 Self Returning Tap	reorder code: →	PL1008	 Stop tap BUB268	reorder code: →	PL1031
 8mm Stem-1/4" BSPT	reorder code: →	PL1000	 Urban Bubbler	reorder code: →	CM1125-MG
 8mm Stem-3/8" BSPT	reorder code: →	PL1001	 8mm Equal Elbow	reorder code: →	PL1002
 1/2" Hollow Brass All Thread	reorder code: →	PL1007			

# ANNEX A

## A950 DRINK FOUNTAIN - INSTALLATION DETAILS

### GENERAL NOTES

ALL DIMENSIONS IN MILLIMETRES.

ENSURE FOUNTAIN IS CLEAN OF CONCRETE SLURRY OR SPRAY WHEN INSTALLED TO PREVENT STAINING OR DAMAGE TO APPLIED FINISHES.

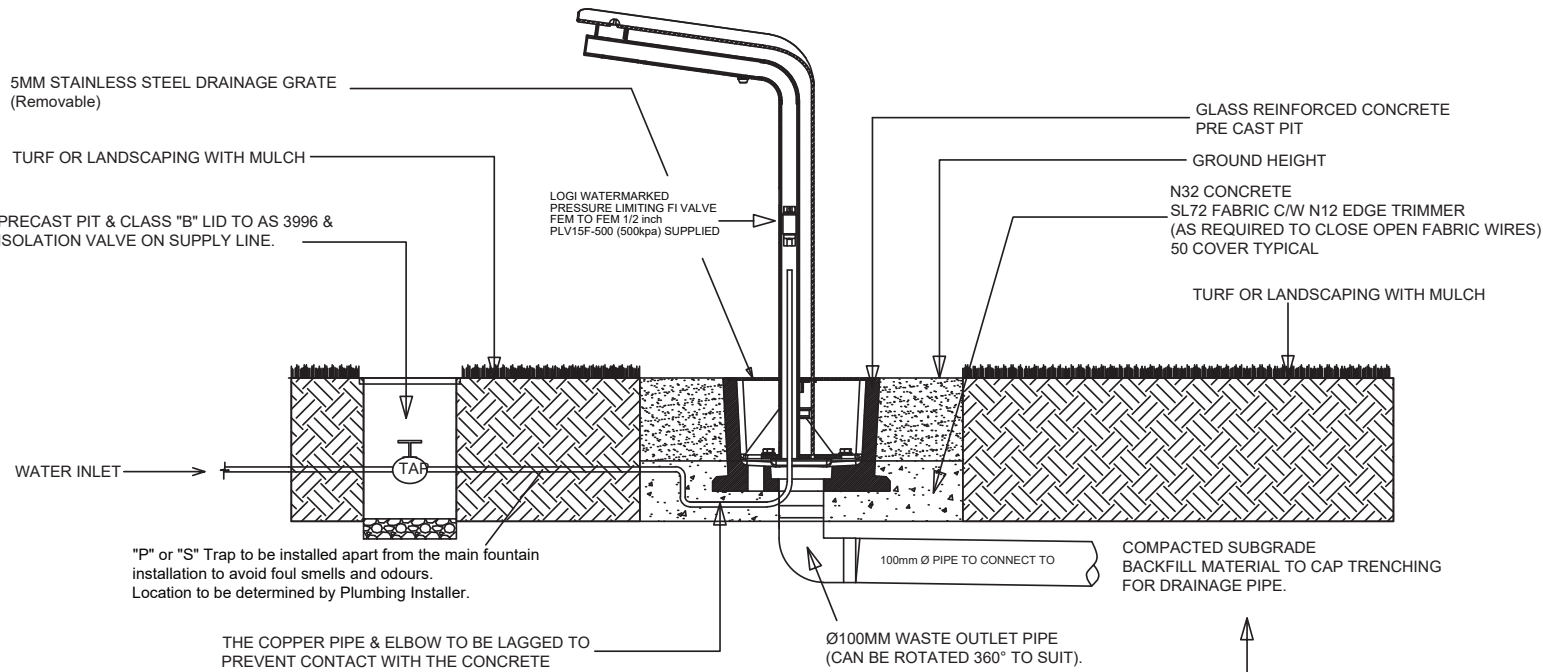
PRE-FLUSH WATER LINE OF ALL DEBRIS BEFORE CONNECTING TO FOUNTAIN.

FOUNTAIN IS TO BE MOUNTED VERTICAL.

ALL INFORMATION & DRAWINGS ARE INDICATIVE ONLY.

### IMPORTANT NOTES:

1. Water Pressure cannot exceed 8BAR. (116 PSI)
2. Fountain is supplied with a pressure reducing valve.
3. A "P" OR "S" TRAP is recommended to be installed to help avoid smells arising from the drainage.
4. The bubbler uses a programmable solenoid valve. Please refer to attached notes for how to adjust the flow time adjustment if required
5. The solenoid valve uses a 9V battery, recommended replacement period 3-5 years, access via underside panel
6. Bottle filler flow rate can be adjusted if required, use supplied custom thumb screw (attached to the access door)
7. Bottle filler stuffing box removal spanner is attached to the access door
8. All plumbing and installation to conform to local plumbing / installation codes of this nature.



### NOTES:

1. ENGINEER TO ADVISE WHERE WATER FOUNTAIN ASSEMBLY IS TO BE INSTALLED WITHIN A RIGID PAVEMENT.

### GENERAL NOTES:

# urban +

URBAN FOUNTAINS AND FURNITURE PTY LTD.  
 5 TELFORD CIRCUIT  
 YATALA, QUEENSLAND 4207  
 PH: (07) 3382 7372  
 FX: (07) 3287 5598 WWW.URBANFF.COM.AU

### COPYRIGHT DISCLAIMER

This drawing, and all information illustrated herein are subject to copyright. This drawing may not be copied in part or whole, without any prior written consent from Urban Fountains and Furniture Pty Ltd. DO NOT SCALE DWG. IF IN DOUBT ASK.

UNITS OF MEASURE: ALL DIMENSIONS ARE IN MILLIMETERS U.O.N. MM

DRAWN BY: N.FERGUSON  
 DATE: 13-09-2023  
 SCALE: 1:5  
 SHEET/S: 1 OF 1

DRAWING TITLE: A950 DRINK FOUNTAIN INSTALL DETAILS

DRAWING NUMBER: A950 DRINK FOUNTAIN ID  
 REVISION: 01

REVISION	DESCRIPTION	DRAWN BY	DATE
01	ISSUED FOR INFORMATION	N.FERGUSON	13-09-2023
00	ISSUED FOR APPROVAL	N.FERGUSON	03/02/2023

GENERAL NOTES:

WHEN CONCRETING UP TO THE PIT TOP EDGE  
ENSURE EXCESS CONCRETE DOES NOT OVERFLOW  
INTO EXPOSED THREADED HOLES ETC

ALL INFORMATION & DRAWINGS ARE INDICATIVE ONLY.

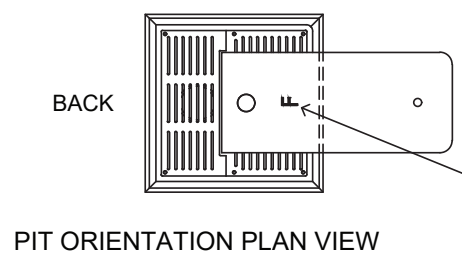
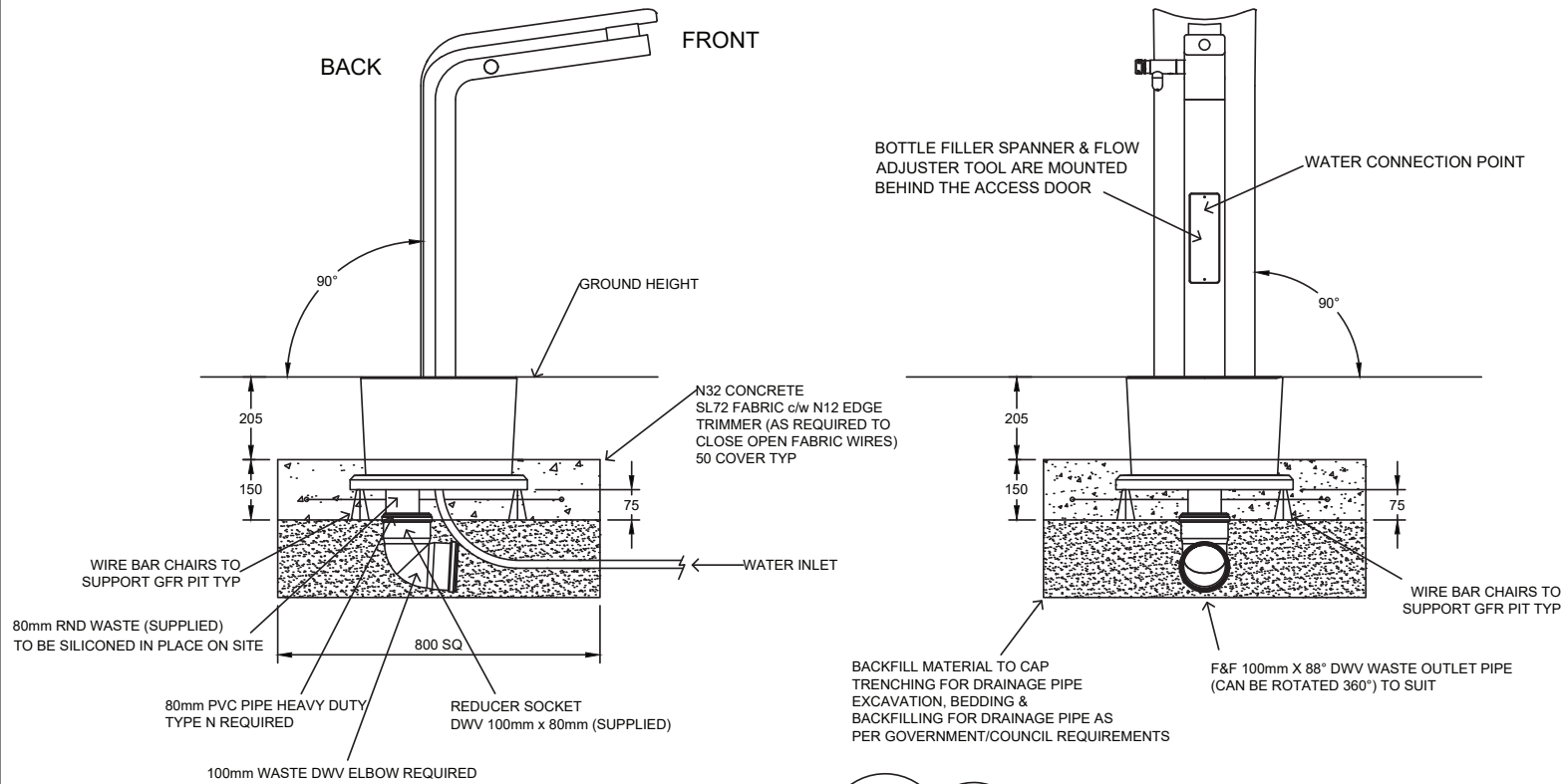
RECOMMENDED INSTALL TOOLS

24mm SOCKET 1/2 DRIVE RATCHET + EXTENSION BAR  
3mm & 4mm ALLEN KEYS

ANTI SEIZE PASTE IS RECOMMENDED TO BE APPLIED  
TO ALL FASTENERS

IMPORTANT NOTES:

ENSURE CONCRETE PIT IS INSTALLED LEVEL TO  
ENABLE PROPER FUNCTION OF THE FOUNTAIN



IMPORTANT TO ENSURE THAT THE CONCRETE PIT IS INSTALLED LEVEL TO  
ENABLE THE PROPER FUNCTION OF THE FOUNTAIN

THE FOUNTAIN & PIT IS DESIGNED FOR ONE SET ORIENTATION ONLY  
THE LETTER "F" INSIDE THE PIT DENOTES THE FRONT OF THE FOUNTAIN



URBAN FOUNTAINS AND FURNITURE PTY LTD.  
5 TELFORD CIRCUIT  
YATALA, QUEENSLAND 4207  
PH: (07) 3382 7372  
FX: (07) 3287 5598  
WWW.URBANFF.COM.AU

COPYRIGHT DISCLAIMER  
This drawing, and all information illustrated herein  
are subject to copyright. This drawing may not be  
copied in part or whole, without any prior written  
consent from Urban Fountains and Furniture Pty  
Ltd.

DO NOT SCALE DWG. IF IN DOUBT ASK.

UNITS OF MEASURE: MM  
ALL DIMENSIONS ARE IN MILLIMETERS U.O.N

DRAWN BY N.FERGUSON	DATE 13-09-2023
SCALE 1:5	SHEET/S 1 OF 1

REVISION	DESCRIPTION	DRAWN BY	DATE	DRAWING TITLE
01	ISSUED FOR INFORMATION	N.FERGUSON	13-09-2023	A950 DRINK FOUNTAIN INSTALL DETAILS
00	ISSUED FOR APPROVAL	N.FERGUSON	03/02/2023	DRAWING NUMBER A950 DRINK FOUNTAIN ID